



**don whitley  
scientific**

[www.dwscientific.co.uk](http://www.dwscientific.co.uk)

## Spiral Plating Whitley Petrifoto System



Photograph bacteria during all stages of growth and incubation

The system can be used inside or outside a workstation; the camera can also be used independently

“3D” light box fitted with multiple daylight colour temperature LEDs for realistic colour rendition

Independently controlled base and side lighting - perfect for all agar and colony types

Compact size allows airlock transfer into any Whitley Workstation

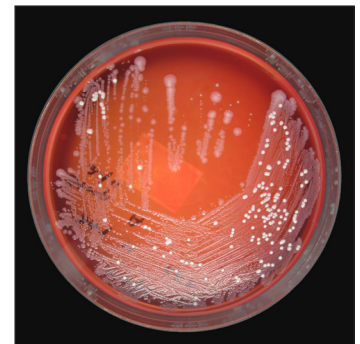
Uses micro SD memory cards

The Whitley Petrifoto System is an exciting accessory for our range of Whitley Workstations. The product fits conveniently inside a workstation and enables you to take detailed photographs of Petri dishes during incubation. This is ideal when colony development needs capturing throughout the incubation cycle.

The system uses a quality digital camera with auto focus, a wide angle zoom lens and a 16.2 megapixel sensor, all designed to ensure good quality images from even inexperienced photographers. The camera can be used independently of the imaging system, either inside or outside the workstation.

The compact unit is small enough to pass through the airlock on every Whitley Workstation but is large enough to feature an innovative lighting system. The “3D” LED light box has independently controlled base and side lighting to illuminate all agar and colony types.

The Petrifoto System uses micro SD memory cards for image storage and the camera is also equipped with built in wifi.



An image produced using the Whitley Petrifoto System

## Standard Features / Specification

### A07207 Whitley Petrifoto System

A "3D" lightbox incorporating a digital camera, 1 x SD micro memory card with adaptor, storage case for spare battery/memory card and sliding tray Petri dish holder.

- Integral LED Driver Unit featuring high intensity LEDs, daylight colour temperature
- Sliding tray to accommodate 1 x 90mm Petri dish
- SanDisk 8GB Ultra SDHC micro memory card

<b>Power Supply</b>	100/240v ±10% 50/60Hz
<b>Assembled system dimension</b>	190 x 235 x 210 mm (W x D x H) (lightbox and camera unit)
<b>Total System Weight</b>	7kg

In the interests of a policy of continuous product improvement the company reserves the right to alter product specifications without prior notice. All rights reserved.  
© 2017 Don Whitley Scientific Limited.